

Long lasting operation... for life time!



NISHAKA PNEUMATICS

MANUFACTURERS OF PNEUMATIC POWER SYSTEMS

An ISO 9001:2008 Certified Company



NISHAKA PNEUMATICS

MANUFACTURERS OF PNEUMATIC POWER SYSTEMS

An ISO 9001:2008 Certified Company

Office & Factory:

46, Madhu Vrinda, Dhuri Industrial Estate No.-1
Sativali Kaman Road, Valiv Phata, Vasai (E),
Pin - 401 208, Dist. Thane, Maharashtra, India
Tel.: +91 0250 2481013 / 6515892
Telefax: +91 0250 2480196 / Mob.: 09323119264
Email: nishakapneumatics12@gmail.com / nishaka_p@bsnl.in
Website: www.nishakapneumatics.com



<http://www.facebook.com/nishaka.pneumatics>

Long lasting operation... for life time!



www.nishakapneumatics.com



NISHAKA PNEUMATICS
MANUFACTURERS OF PNEUMATIC POWER SYSTEMS
An ISO 9001:2008 Certified Company



Long lasting operation...
for life time!

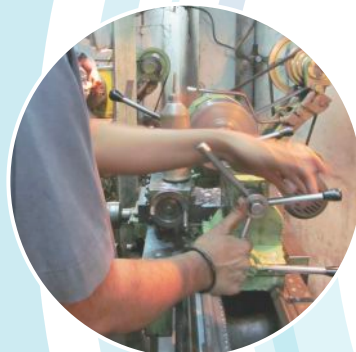


NISHAKA PNEUMATICS
MANUFACTURERS OF PNEUMATIC POWER SYSTEMS
An ISO 9001:2008 Certified Company





NISHAKA PNEUMATICS
MANUFACTURERS OF PNEUMATIC POWER SYSTEMS
An ISO 9001:2008 Certified Company

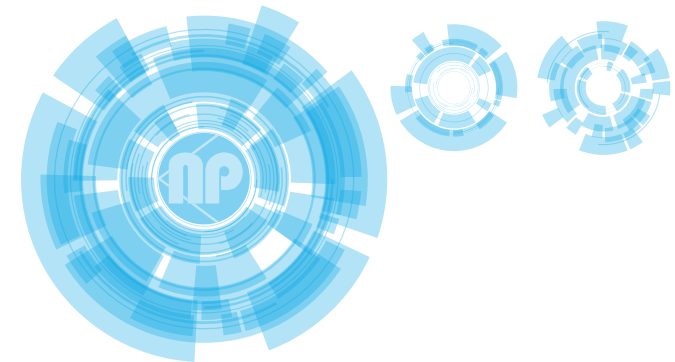


NISHAKA PNEUMATICS
MANUFACTURERS OF PNEUMATIC POWER SYSTEMS
An ISO 9001:2008 Certified Company

*N*ishaka Pneumatics a leading manufacturer in the field of Pneumatic Valves was established in 1992. Since then the Company has grown to offer many different products of superior quality and hence it can be proudly claimed that the Company's quality of products are undisputable. Our Esteemed Customers are from various fields such as Textile, Chemical, Sugar, Paint and other automation Industries.

Our Factories are located at Vasai East Industrial Area having floor space of 2200 Sq. feet (Unit 1) And 3000 sq. feet (Unit II) respectively.

Our products have been fitted in the machinery exported to various countries like USA, Brazil, Nigeria, South Africa, Bangladesh, Srilanka, and Indonesia, The products are unique in its quality which are manufactured with fully automatic machines, thereby giving high end Performance.





NISHAKA PNEUMATICS
 MANUFACTURERS OF PNEUMATIC POWER SYSTEMS
 An ISO 9001:2008 Certified Company



NISHAKA PNEUMATICS
 MANUFACTURERS OF PNEUMATIC POWER SYSTEMS
 An ISO 9001:2008 Certified Company

Pneumatic Rotary Actuator



Design	Centre port Compact Design With Aluminium confirming. Powerful & Compactable Piston Harden Pinion. No Metal To Metal Contact, Namur Mounting.
Size for D/A	50042 / 50056 / 50069 / 50075 / 50101 / 50125
Size for S/A	90042 / 90056 / 90069 / 90075 / 90101 / 90125
Operation	0 to 90@ (Degree) Rotary Motion
Working Pressure	80 P.S.I
Operating pressure	3 to 10 Kg
Material	Aluminum anodized
Media	Air

Nishaka Pneumatics Rotary Actuator is used for Butterfly Valve, Ball Valve, Plug Valve Etc. Available in Double Acting and Single Acting Spring Return. Torque output ranging from :3 Nm To 430 Nm Trouble Free for more than one million cycles operation Rotation 0 to 90@ (Degree) Rotary Motion Working Pressure 80 P.S.I Operating Pressure 3 to 10 Kg Mounting interface-Centre port, NAMUR for solenoid valves, ISO 5211 for valves and self centering actuator. Zero play actuators

Pneumatic Cylinder



Type	Pneumatic Air cylinder
Manufacturing Range Sizes	1 1/2" NB (40mm) To 12" NB (300mm) Other size on request
M. O .C.	Piston Seal : U- Type Synthetic Rubber Seal With Extra Long & Rigid Innerlip for Low Friction & Zero Leakage. Pipe : Inside is Hard Cromium Plated Piston Rod : Ground & Hard Cromium Plated. Seal : Special profile Cushion Seal Provided for Smooth & Jerk Free Operation & Synthetic Rubber Rod To Prevent Ingress of Dust Wipper Seal
Mountings	Attached
Rating	Continuous Operation for Air Pressure up to 150 PSI & Temperature up to + 70 Deg C

Flow Control Valves

Type	Flow Control Valves
Manufacturing Range Sizes	1/8" BSP / 1/4" BSP/ 1/2" BSP



Ball Valve With Actuator

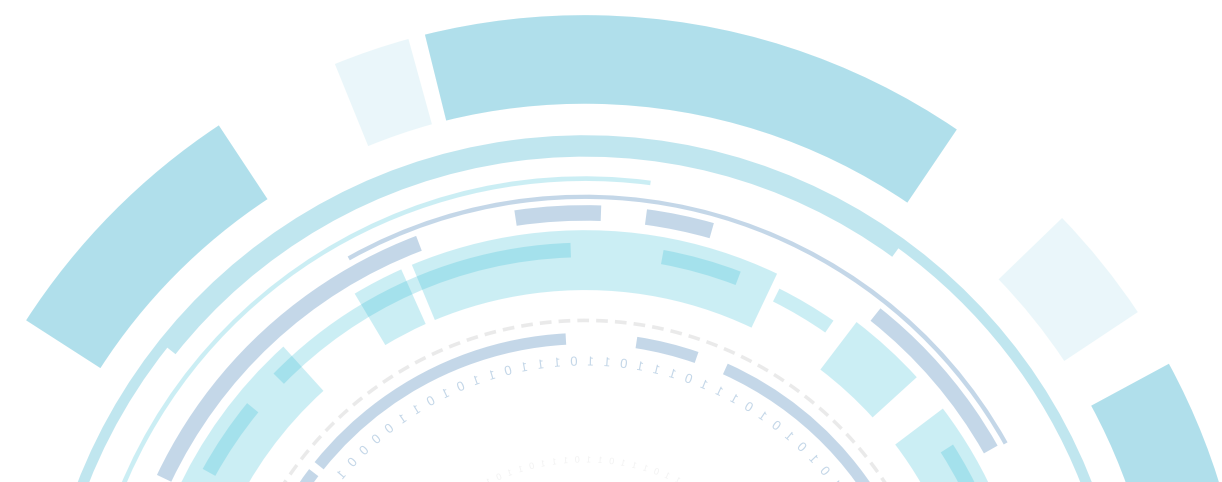
Type	3 Pcs Design Investment Casting With Actuator Operated Ball Valves. 2 pc Design Investment Casting With Actuator Operated For Flanged ends Ball Valves .
Mfg. Std.	BS-5351
Ends	1. Flanged ends to ASME B16.5 RF 150# & 300# /BS 10 Table D, E & F., 2. Screwed ends to BSP/NPT 3. Triclover ends 4. Socket Weld ends
Manufacturing Range Sizes	1. 1/2" NB (15mm) To 6" NB (150mm) For Flanged ends 2. 1/2" NB (15mm) To 4" NB (100mm) For Triclover ends 3. 1/2" NB (15mm) To 3" NB (80mm) For Screwed ends 4. 1/2" NB (15mm) To 2" NB (50mm) For Socket weld ends Up to 8" on request
Face To Face	As per ASME B16.10. For Flanged ends.
Inspection & Testing	BS 6755/ API-598
M. O .C.	SS-316 (ASTM A-351 GR CF8M), SS-304 (ASTM A-351 GR CF8) C.S (ASTM A-216 GR WCB) other material on request.



Wafer Type Non Return Valve



Type	Wafer Design Non Return Valves,
Manufacturing Range Sizes	1/2" (15mm) To 3" (80mm)
Mounting	Sand witch Type





NISHAKA PNEUMATICS
 MANUFACTURERS OF PNEUMATIC POWER SYSTEMS
 An ISO 9001:2008 Certified Company



NISHAKA PNEUMATICS
 MANUFACTURERS OF PNEUMATIC POWER SYSTEMS
 An ISO 9001:2008 Certified Company

Solenoid Valve



Type	Direct Acting Solenoid Valves 2 Port and 3 Port Normally Closed/Normally Open.
Manufacturing Range Sizes	1/8" BSP / 1/4" BSP/ 1/2" BSP
Orifice	1.5mm Standard (Other sizes on request.)
Pressure	0 to 12 Kg/cm2
Media	Air, Water & Non Corrosive Liquids & Gases
Body	Hard Anodized Aluminium Body, Brass & stainless steel Against Specific Orders
Manual Override	Optional
Data	Epoxy Mounded, Water Proof, Continuous Duty Coils, 6 to 230 V DC & 9.5 Watts Low Watts as per request



Type	Direct Acting Solenoid Valves (Namur Mounting) 2 Port and 3 Port Normally Closed/Normally Open.
Manufacturing Range Sizes	1/8" BSP / 1/4" BSP/ 1/2" BSP
Orifice	1.5mm Standard (Other sizes on request.)
Pressure	0 to 12 Kg/cm2
Media	Air, Water & Non Corrosive Liquids & Gases
Body	Hard Anodized Aluminium Body, Brass & stainless steel Against Specific Orders
Manual Override	Optional
Data	Epoxy Mounded, Water Proof, Continuous Duty Coils, 6 to 230 V DC & 9.5 Watts Low Watts as per request.



Type	Poppet Type Solenoid Valves (Namur Mounting) 3 Port and 4 Port Normally Closed/Normally Open.
Manufacturing Range	1/4" BSP/ 1/2" BSP
Orifice	1.5mm Standard (Other sizes on request.)
Pressure	0 to 12 Kg/cm2
Media	Air, Water & Non Corrosive Liquids & Gases
Body	Hard Anodized Aluminium Body Brass & stainless steel Against Specific Orders
Manual Override	Optional
Data	Epoxy Mounded, Water Proof, Continuous Duty Coils, 6 to 230 V DC & 9.5 Watts Low Watts as per request.

Rubber Seat Butterfly Valve With Actuator

Type	Wafer Type Centric Disc Rubber Seat Butterfly Valve With Actuator Operated
Mfg. Std.	BS-5155/ API-609
Ends	Wafer To suit ASME B16.5, ANSI-150# Flanges
Manufacturing Range Sizes	1 1/2" NB (40mm) To 8" NB (200mm) Up to 12" on request
Inspection & Testing	BS 6755/ API-598
M. O .C.S	S-316 (ASTM A-351 GR CF8M), SS-304 (ASTM A-351 GR CF8) C.S (ASTM A-216 GR WCB) & Cast Iron



3 Way Ball Valve With Actuator



Type	3 way Investment Casting With Actuator Operated Ball Vales With 'T' Port & 'L' Port Ball
Ends	1. Flanged ends to ASME B16.5 RF 150#/ BS 10 Table D, E & F., 2. Screwed ends to BSP/NPT 3. Triclover ends. 4. Socket Weld ends .
Manufacturing Range Sizes	1/2" NB (15mm) To 3" NB (80mm) Up to 6" on request
Inspection & Testing	BS 6755/ API-598
M. O .C.	SS-316 (ASTM A-351 GR CF8M), SS-304 (ASTM A-351 GR CF8) C.S (ASTM A-216 GR WCB) other material on request.

Ball Valve Hand Lever Operated

Type	3 Pcs Design Investment Casting With Hand Lever Operated Ball Valves. 2 pc Design Investment Casting With Hand Lever Operated For Flanged ends Ball Valves .
Mfg. Std.	BS-5351
Ends	1. Flanged ends to ASME B16.5 RF 150# & 300# /BS 10 Table D, E & F., 2. Screwed ends to BSP/NPT 3. Triclover ends 4. Socket Weld ends
Manufacturing Range Sizes	1. 1/2" NB (15mm) To 6" NB (150mm) For Flanged ends 2. 1/2" NB (15mm) To 4" NB (100mm) For Triclover ends 3. 1/2" NB (15mm) To 3" NB (80mm) For Screwed ends 4. 1/2" NB (15mm) To 2" NB (50mm) For Socket weld ends Up to 8" on request
Face To Face	As per ASME B16.10. For Flanged ends.
Inspection & Testing	BS 6755/ API-598
M. O .C.	SS-316 (ASTM A-351 GR CF8M), SS-304 (ASTM A-351 GR CF8) C.S (ASTM A-216 GR WCB) other material on request.



PTFE Seat Butterfly Valve With Actuator



Type	Wafer Type Offset Disc Butterfly Valve With Actuator Operated .
Mfg. Std.	BS-5155/ API-609
Ends	Wafer To suit ASME B16.5, ANSI-150# Flanges
Manufacturing Range Sizes	1 1/2" NB (40mm) To 6" NB (150mm) Up to 8" on request
Inspection & Testing	BS 6755/ API-598
M. O .C.	SS-316 (ASTM A-351 GR CF8M), SS-304 (ASTM A-351 GR CF8) C.S (ASTM A-216 GR WCB) other material on request.



NISHAKA PNEUMATICS
 MANUFACTURERS OF PNEUMATIC POWER SYSTEMS
 An ISO 9001:2008 Certified Company



NISHAKA PNEUMATICS
 MANUFACTURERS OF PNEUMATIC POWER SYSTEMS
 An ISO 9001:2008 Certified Company

Pneumatic Two Way Control Valve



Type	Pneumatic TWO way Control Valve
Ends	Flanged ends Full Bore.
Manufacturing Range Sizes	¾" NB (20mm) To 2½" NB (65mm)
M. O .C.	Cast Iron grade No.24 With SS Working part. PTFE Seated
Media	Steam/ Air/Fluid Oil,
Working Pressure	16 Bar
Operating pressure	4 to 10 Bar
Working Temp	150 Deg.

Pneumatic Three Way Control Valve

Type	Pneumatic THREE way Control Valve
Ends	Flanged ends Full Bore.
Manufacturing Range Sizes	¾" NB (20mm) To 2 ½" NB (65mm)
M. O .C.	Cast Iron grade No.24 With SS Working part. Copper Seated
Media	Steam/ Air/Fluid Oil,
Working Pressure	16 Bar
Operating pressure	4 to 10 Bar
Working Temp	250 Deg.



Y Type Control Valve



Type	2/2 Way Pneumatic on-off 'Y' type Control Valve Normally closed Type and Normally open Type.
Ends	Screwed ends to BSP Full Bore Flanged ends To 150#/Table E,F & D.
Manufacturing Range Sizes	½" NB (15mm) To 2" NB (50mm) Flanged ends : ½" NB (15mm) To 2 ½" NB (65mm)
M. O .C.	SS-316 (ASTM A-351 GR CF8M), SS-304 (ASTM A-351 GR CF8), C.S (ASTM A-216 GR WCB) other material on request.
Media	Steam/Air/Fluid Oil,
Working Pressure	16 Bar Operating pressure 4 to 10 Bar
Operating pressure	4 to 10 Bar
Working Temp	150 Deg.

Wafer Type Concentric Disc Butterfly Valve

Type	Wafer Type Centric Disc Butterfly Valve With Actuator Operated. Wafer Type Centric Disc Butterfly Valve With Gear Operated. Wafer Type Centric Disc Butterfly Valve With Hand Lever Operated.
Mfg. Std.	BS-5155/ API-609
Ends	Wafer To suit ASME B16.5, ANSI-150# Flanges
Manufacturing Range Sizes	1¼" NB (32mm) To 6" NB (150mm) Up to 8" on request
Inspection & Testing	BS 6755/ API-598
M. O .C.	SS-316 (ASTM A-351 GR CF8M), SS-304 (ASTM A-351 GR CF8) C.S (ASTM A-216 GR WCB) other material on request.



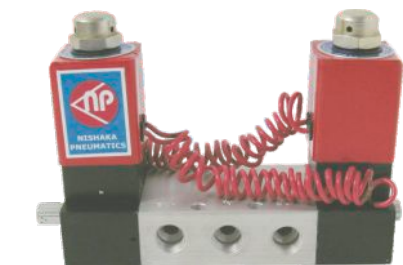
Safety Valve Screwed End



Type	Safety Valves are used for machined and control pressure relief.
Ends	Screwed ends to BSP female and male thread / Flanged ends on request
Manufacturing Range Sizes	½" NB (15mm) To 1½" NB (40mm)
Inspection & Testing	BS 6755/ API-598
M. O .C.S	S-316 (ASTM A-351 GR CF8M), SS-304 (ASTM A-351 GR CF8) C.S (ASTM A-216 GR WCB) other material on request.

Spool Type Solenoid Valve

Type	3 way and 4 way Spool Type solenoid Valves.
Manufacturing Range Sizes	1/8" BSP / ¼" BSP/ ½" BSP
Orifice	5mm for 1/8" BSP, 6.5mm For ¼" BSP And 12.5 for ½" BSP
Pressure	2.5 to 10 Kg/cm2
Media	Air – Filtered and Lubricated
Body	Hard Anodized Aluminium Body Brass & stainless steel Against Specific Orders
Manual Overdrive	Optional
Data	Epoxy Mounded, Water Proof, Continuous Duty Coils, 6 to 230 V DC & 9.5 Watts Low Watts as per request



Type	3 way and 4 way Spool Type Hand Lever Valves.
Manufacturing Range Sizes	1/8" BSP / ¼" BSP/ ½" BSP
Pressure	0 to 10 Kg/cm2
Media	Air –Filtered and Lubricated
Body	Hard Anodized Aluminium Body
Operation	Hand Lever



Type	3 way and 4 way Spool Type Push Pull Valves.
Manufacturing Range Sizes	1/8" BSP / ¼" BSP/ ½" BSP
Pressure	0 to 10 Kg/cm2
Media	Air –Filtered and Lubricated
Body	Hard Anodized Aluminium Body
Operation	Push Or Pull

